

# Samoa Tsunami- Satellite Imagery Observations

## Upolu Tsunami Damage - Aufaga (West)

Low lying areas along coast show significant tsunami impact.



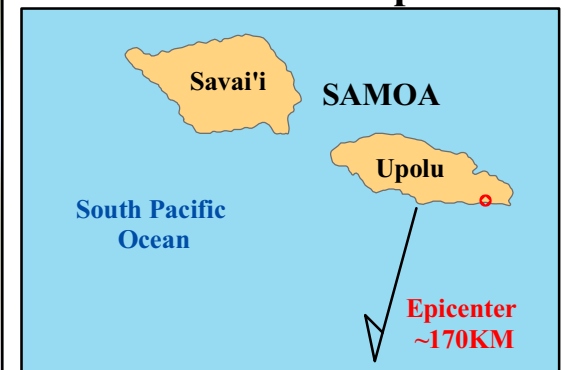
**USAID**  
FROM THE AMERICAN PEOPLE

14° 2'23.83"S 171°31'27.02"W

**Pre-Event Imagery**



**Locator Map**



Produced by: Geographic Information Unit  
Office of Foreign Disaster Assistance  
U.S. Agency for International Development  
Imagery provided under the NextView Contract  
Image Date: September 30, 2009  
GLIDE #: TS-2009-000210-WSM  
Produced: October 7, 2009

# Samoa Tsunami- Satellite Imagery Observations

## Upolu Tsunami Damage - Vavau

Low lying areas along coast show significant tsunami impact.



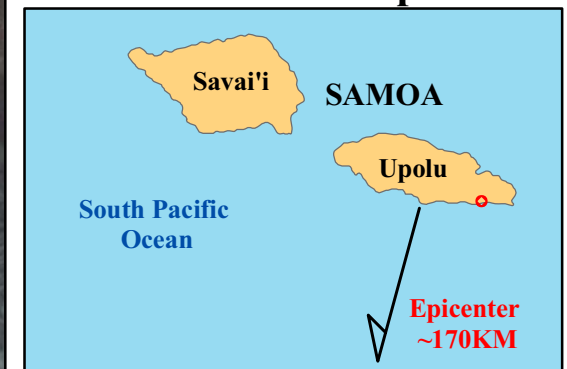
**USAID**  
FROM THE AMERICAN PEOPLE

14° 2'33.66"S 171°32'56.56"W

### Pre-Event Imagery



### Locator Map



Produced by: Geographic Information Unit  
Office of Foreign Disaster Assistance  
U.S. Agency for International Development  
Imagery provided under the NextView Contract  
Image Date: September 30, 2009  
GLIDE #: TS-2009-000210-WSM  
Produced: October 7, 2009

# Samoa Tsunami- Satellite Imagery Observations

## Upolu Tsunami Damage - Vavau Beach Resort

Low lying areas along coast show significant tsunami impact.



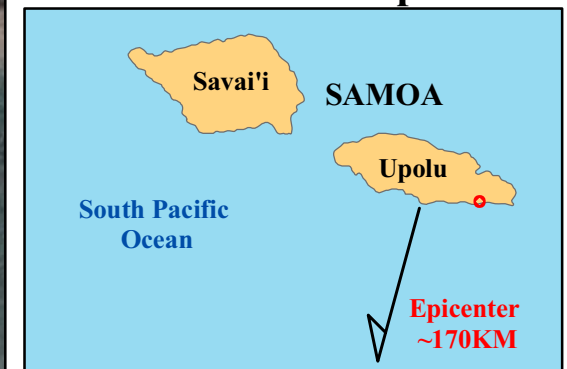
**USAID**  
FROM THE AMERICAN PEOPLE

14° 2'37.11"S 171°33'18.83"W

### Pre-Event Imagery



### Locator Map

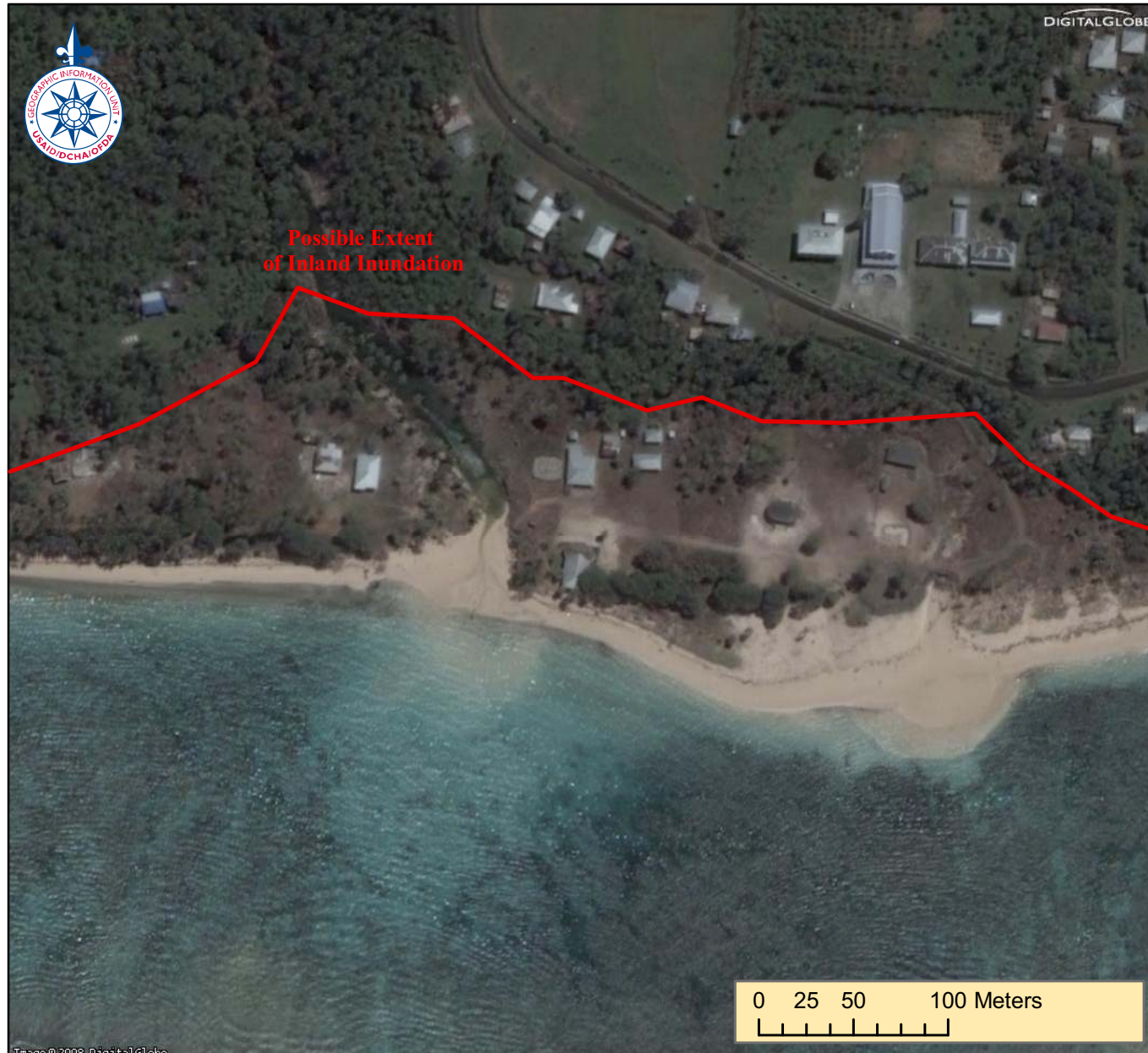


Produced by: Geographic Information Unit  
Office of Foreign Disaster Assistance  
U.S. Agency for International Development  
Imagery provided under the NextView Contract  
Image Date: September 30, 2009  
GLIDE #: TS-2009-000210-WSM  
Produced: October 7, 2009

# Samoa Tsunami- Satellite Imagery Observations

## Upolu Tsunami Damage - Lotofago

Low lying areas along coast show significant tsunami impact.



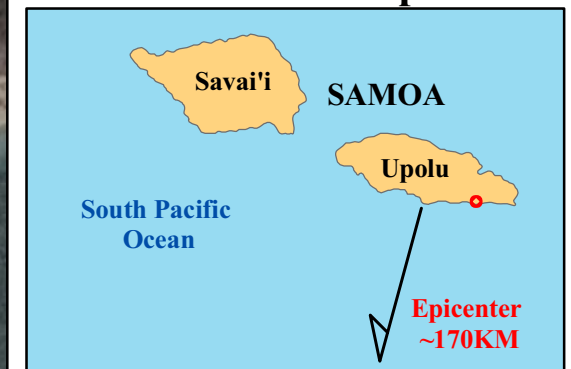
**USAID**  
FROM THE AMERICAN PEOPLE

14° 2'38.63"S 171°34'26.64"W

### Pre-Event Imagery



### Locator Map



Produced by: Geographic Information Unit  
Office of Foreign Disaster Assistance  
U.S. Agency for International Development  
Imagery provided under the NextView Contract  
Image Date: September 30, 2009  
GLIDE #: TS-2009-000210-WSM  
Produced: October 7, 2009

# Samoa Tsunami- Satellite Imagery Observations

## Upolu Tsunami Damage - Salani

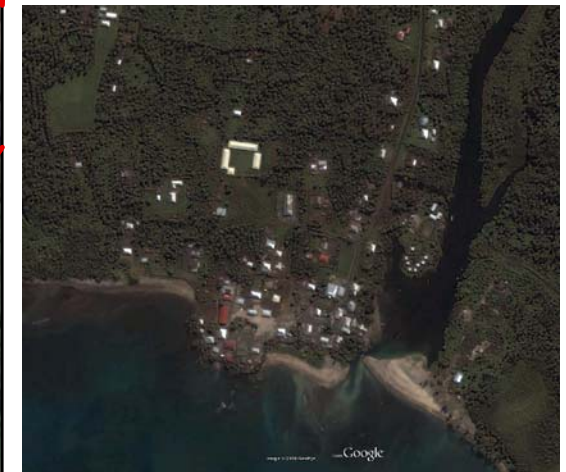
Low lying areas along coast show significant tsunami impact.



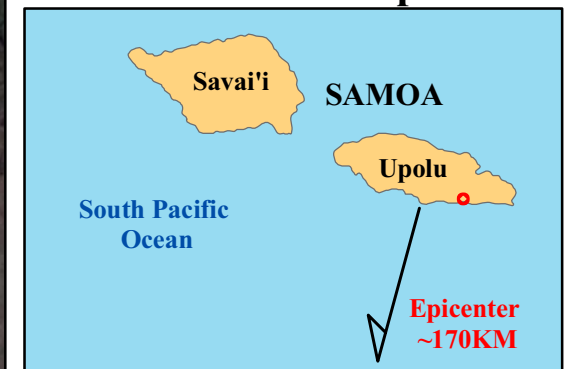
**USAID**  
FROM THE AMERICAN PEOPLE

14° 2'38.63"S 171°34'26.64"W

### Pre-Event Imagery



### Locator Map



Produced by: Geographic Information Unit  
Office of Foreign Disaster Assistance  
U.S. Agency for International Development  
Imagery provided under the NextView Contract  
Image Date: September 30, 2009  
GLIDE #: TS-2009-000210-WSM  
Produced: October 7, 2009

# Samoa Tsunami- Satellite Imagery Observations

## Upolu Tsunami Damage - Siumu

Low lying areas along coast show significant tsunami impact.



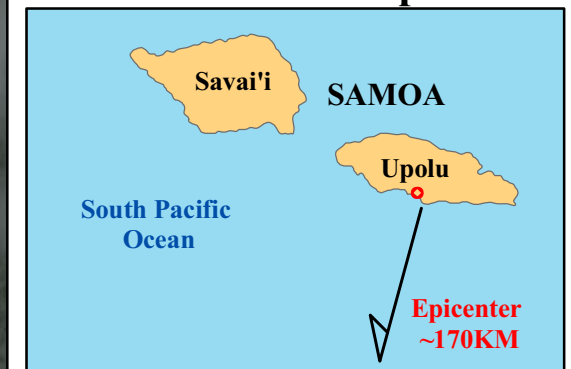
**USAID**  
FROM THE AMERICAN PEOPLE

14° 0'45.14"S 171°46'47.64"W

### Pre-Event Imagery



### Locator Map



Produced by: Geographic Information Unit  
Office of Foreign Disaster Assistance  
U.S. Agency for International Development  
Imagery provided under the NextView Contract  
Image Date: September 30, 2009  
GLIDE #: TS-2009-000210-WSM  
Produced: October 7, 2009