

# DREF operation



## Samoa: Earthquake and tsunami

DREF operation n° MDRWS001  
30 September 2009

CHF 325,134 has been allocated from the Federation's Disaster Relief Emergency Fund (DREF) to support the Samoa Red Cross in delivering immediate assistance to up to 15,000 beneficiaries (3,000 families). Unearmarked funds to repay DREF are encouraged.

This operation is expected to be implemented over a minimum period of three months and may be extended to either six or nine months. This depends upon the results of the needs assessment that has just started.

Final Report will be made available three months after the end of the operation (by March 2010)

[<click here for DREF budget, contact details, or view a map of the affected area>](#)



Shows the Shalei Resort on the South-east coast of Upolu, Samoa.  
Photo: International Federation

## The Situation

On 29 September 2009, at the universal time of 17:48:07, the Pacific Tsunami Warning Centre reported an earthquake measuring a magnitude of 8.3 in the Pacific, off American Samoa; which generated a Pacific wide tsunami warning. (At the local time of 0408hours the Pacific Tsunami Warning Centre stated that a Tsunami warning was in effect for American Samoa, Samoa, Niue, Wallis-Futuna, Tokelau, Cook Islands, Tonga, Tuvalu, Kiribati, Kermadec Island, Fiji, Howland-Baker, Jarvis Island, New Zealand, French Polynesia, and Palmyra Island).

The earthquake lasted over five minutes. The epicentre of the quake was located 190 km southwest of American Samoa. Samoan reports say the wave that hit in Apia was 0.7 of a metre while the second, larger wave in Pago Pago, in American Samoa, was measured at 1.7 metres.

Apia was evacuated by police and Red Cross volunteers and people sent to higher ground inland. Preliminary assessments indicate that low lying coastal areas of Apia have been affected with homes damaged and reports of death and injuries. There are many different reports on the number of people killed or injured. Currently the Samoa ministry of human services have confirmed 55 people killed in Samoa. International media are indicating the death toll may reach 100.

United Nations Disaster Assessment and Coordination (UNDAC) - trained staff have been deployed to conduct preliminary assessments, and current information indicates that up to 114 tourists are in an evacuation centre where they are being sheltered and assisted by the local government the village of Lalomanu, in the district of Aleitaca. The Samoan government is trying to assist with their transportation and housing. Unconfirmed reports are that there are 14 tourists missing and five dead. The tourists are said to be from New Zealand, United Kingdom, Germany, Uruguay. The main need in this area now is to evacuate the tourists and those injured. Another affected area is Putasy, in the district of Salelili.

## Coordination and partnerships

Samoa Red Cross was active immediately and has been sharing information with the International Federation regional office in Suva, Fiji; and the Asia Pacific zone office in Kuala Lumpur, Malaysia. Furthermore, the Samoa Red Cross has also requested for international assistance.

The International Federation's regional office in Suva is taking the operational lead; and the disaster management unit (DMU) in Kuala Lumpur is undertaking the international lead role. Response from the International Federation in Kuala Lumpur and Suva includes a field assessment coordination team (FACT) team from the region. The team includes Pacific islanders trained in the regional disaster response team as additional resource people.

The DMU will be providing the overall coordination for all offers of assistance from the Red Cross Red Crescent Movement partners to ensure a cooperative response whilst minimizing the requirements of additional management from the Samoa Red Cross.

New Zealand's International Aid & Development Agency (NZAID)/the New Zealand (NZ) ministry of foreign affairs and trade have established a crisis centre to co-ordinate NZ response.

The International Federation office in Suva is in regular contact with the 13 national societies of the Pacific region. Each national society has trained staff and volunteers in disaster response. All national societies have prepositioned emergency response stocks including: blankets, tarpaulins, water containers and basic household items such as cooking utensils.

## Red Cross and Red Crescent action

The Samoa Red Cross responded early on the morning of September 29 by mobilizing 50 volunteers in Apia for the evacuation effort. The national society was also in contact with village units on Upolu Island, as well as the branch on Savai'i Island. Assessment teams with relief supplies have deployed to the south east part of Upolu Island to assess the situation; a doctor is part of the team.

The national society is distributing first aid supplies and providing water to evacuees. At the time of reporting, 135 volunteers have been mobilized, and more are coming to support the operation.

The New Zealand Red Cross (NZRC) has offered a range of support to Samoa Red Cross, which has been accepted. NZRC has already mobilized a delegate to Samoa and will send 500 tarpaulins, 500 water cans and 100 refill first aid packs to Samoa Red Cross by 1 October 2009. Furthermore NZRC has a domestic appeal in support of response operations. Australian Red Cross have also been in discussions with the International Committee of the Red Cross (ICRC) on the possibility of providing restoring family links (RFL) support if required.

The International Federation's Pacific regional office in Suva has made available its support to Samoa Red Cross, and is maintaining contact with the other 11 national societies in the Pacific region as well as the Asia Pacific zone office in Kuala Lumpur. All 12 national societies have staff trained in disaster response. A FAC Team is currently being mobilized consisting of: a team leader; watsan; relief; health; logistics; psychosocial support; communications and restoring family links delegates. Additional technical support in disaster management, health and care, livelihoods, logistics, finance and reporting are also available from the Suva regional office if required.

In addition, the airport authority in Niua, north of Tonga has confirmed via radio that Niua has also been hit by the tsunami. Assessments in the affected area of Ha'apai have been completed. Tonga Red Cross is providing assistance to nine families in the affected area of Ha'apai.

## The needs

It is currently believed that over 60 villages have been significantly impacted and many require water, food, non-food items, alternative shelter, health and psychosocial support.

The Samoa Red Cross is requesting assistance to support the relief needs already identified of those already affected by the earthquake/tsunami.

International aid will be provided through this Disaster Relief Emergency Fund (DREF) to support the current operations being conducted by the Samoa Red Cross staff and volunteers based on ongoing assessments and further information from the government and other partners.

Specifically, this DREF operation seeks support to assist with ongoing assessments of the tsunami including the provision of relief assistance for up to 3,000 families including: water, non-food items, household kits, cooking utensils, blankets, mosquito nets, buckets, water storage containers and shelter materials.

## The proposed operation

### Relief distributions (food and basic non-food items)

**Objective:** The provision of 1,000 kitchen sets, 1,000 mosquito nets, 1,000 blankets and sheltering materials for 3,000 families (15,000 people).

#### Activities planned:

- Conduct needs and capacity assessments.
- Identify beneficiaries using criteria agreed upon between the national society and the local communities.
- Procure supplies based on International Federation logistics standards.
- Organize transport to the distribution point.
- Organize the various distributions by the local chapters concerned.
- Ensure proper recording of distributed items.
- Carry out monitoring and evaluation.

### Water, sanitation and hygiene promotion

**Objective:** Provision of household-level water treatment items, 6,000 water purification tablets, 3,000 jerry cans and 2,000 hygiene kits for 3,000 families (15,000 people) in the most affected areas

#### Activities planned:

- Assess the existing coverage with a view of ensuring availability of an adequate water supply
- Provide potable water, appropriate sanitation and hygiene promotion for 3,000 families (15,000 people) in the most affected areas

## How we work

*All International Federation assistance seeks to adhere to the [Code of Conduct for the International Red Cross and Red Crescent Movement and Non-Governmental Organizations \(NGOs\) in Disaster Relief](#) and is committed to the [Humanitarian Charter and Minimum Standards in Disaster Response \(Sphere\)](#) in delivering assistance to the most vulnerable.*

The International Federation's activities are aligned with its Global Agenda, which sets out four broad goals to meet the Federation's mission to "improve the lives of vulnerable people by mobilizing the power of humanity".

### Global Agenda Goals:

- Reduce the numbers of deaths, injuries and impact from disasters.
- Reduce the number of deaths, illnesses and impact from diseases and public health emergencies.
- Increase local community, civil society and Red Cross Red Crescent capacity to address the most urgent situations of vulnerability.
- Reduce intolerance, discrimination and social exclusion and promote respect for diversity and human dignity.

## Contact information

For further information specifically related to this operation please contact:

- Samoa: Samoa Red Cross, Ms. Tautala Mauala, Secretary General, phone: +68523686; email: [samoaredcross@samoa.ws](mailto:samoaredcross@samoa.ws)
- Suva: Aurelia Balpe, Head of Pacific Regional Office, phone: +679 331 1855; email: [aurelia.balpe@ifrc.org](mailto:aurelia.balpe@ifrc.org)
- Suva: Ruth Lane, Regional Disaster Risk Reduction Delegate, phone: +679 331 1855; email: [ruth.lane@ifrc.org](mailto:ruth.lane@ifrc.org)

Federation Asia-Pacific zone office, Kuala Lumpur:

- Michael Annear, disaster management coordinator, Phone: +603 9207 5726, mobile: +6012 234 6591, email: [michael.annear@ifrc.org](mailto:michael.annear@ifrc.org)
- Penny Elghady, resource mobilization and PMER coordinator, Phone: +603 9207 5775, fax: +603 2161 0670, email: [penny.elghady@ifrc.org](mailto:penny.elghady@ifrc.org)
- Please send all pledges of funding to [zonerm.asiapacific@ifrc.org](mailto:zonerm.asiapacific@ifrc.org)
- Jeremy Francis, regional logistics coordinator, Phone: +6012 298 9752, fax: +60 3 2168 8573, email: [jeremy.francis@ifrc.org](mailto:jeremy.francis@ifrc.org)

[<Budget and map below; click here to return to title page>](#)

## **BUDGET SUMMARY**

Samoa: Earthquake and Tsunami

MDRWS001

**ORIGINAL**

### **RELIEF NEEDS**

Shelter	15,000
Construction Materials	
Clothing & Textiles	10,000
Food	15,000
Seeds & Plants	
Water & Sanitation	49,000
Medical & First Aid	
Teaching Materials	15,000
Utensils & Tools	30,000
Other Supplies & Services	

---

<b>Total Relief Needs</b>	<b>134,000</b>
---------------------------	----------------

### **CAPITAL EQUIPMENT**

Land & Buildings
Vehicles Purchase
Computers & Telecom Equipment
Office/Household Furniture & Equip.
Medical Equipment
Other Machinery & Equipment

### **TRANSPORT, STORAGE & VEHICLES**

Storage - Warehouse	15,000
Distribution & Monitoring	10,000
Transport & Vehicles Costs	110,000

### **PERSONNEL**

International Staff	
Regionally Deployed Staff	10,000
National Staff	
National Society Staff	10,000
Consultants	

### **WORKSHOPS & TRAINING**

Workshops & Training
----------------------

### **GENERAL EXPENSES**

Travel	4,000
Information & Public Relations	5,000
Office running costs	
Communication Costs	3,000
Professional Fees	
Financial Charges	1,000
Other General Expenses	2,000

### **PROGRAMME SUPPORT**

Programme Support - PSR	21,134
-------------------------	--------

---

<b>Total Operational Needs</b>	<b>191,134</b>
--------------------------------	----------------

---

<b>Total Appeal Budget (Cash &amp; Kind)</b>	<b>325,134</b>
--	----------------

---

**Available Ressources**

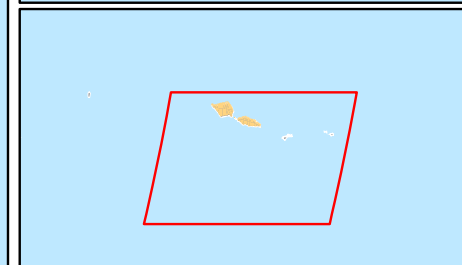
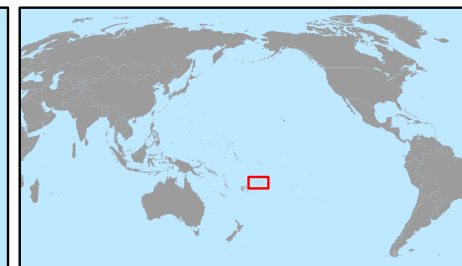
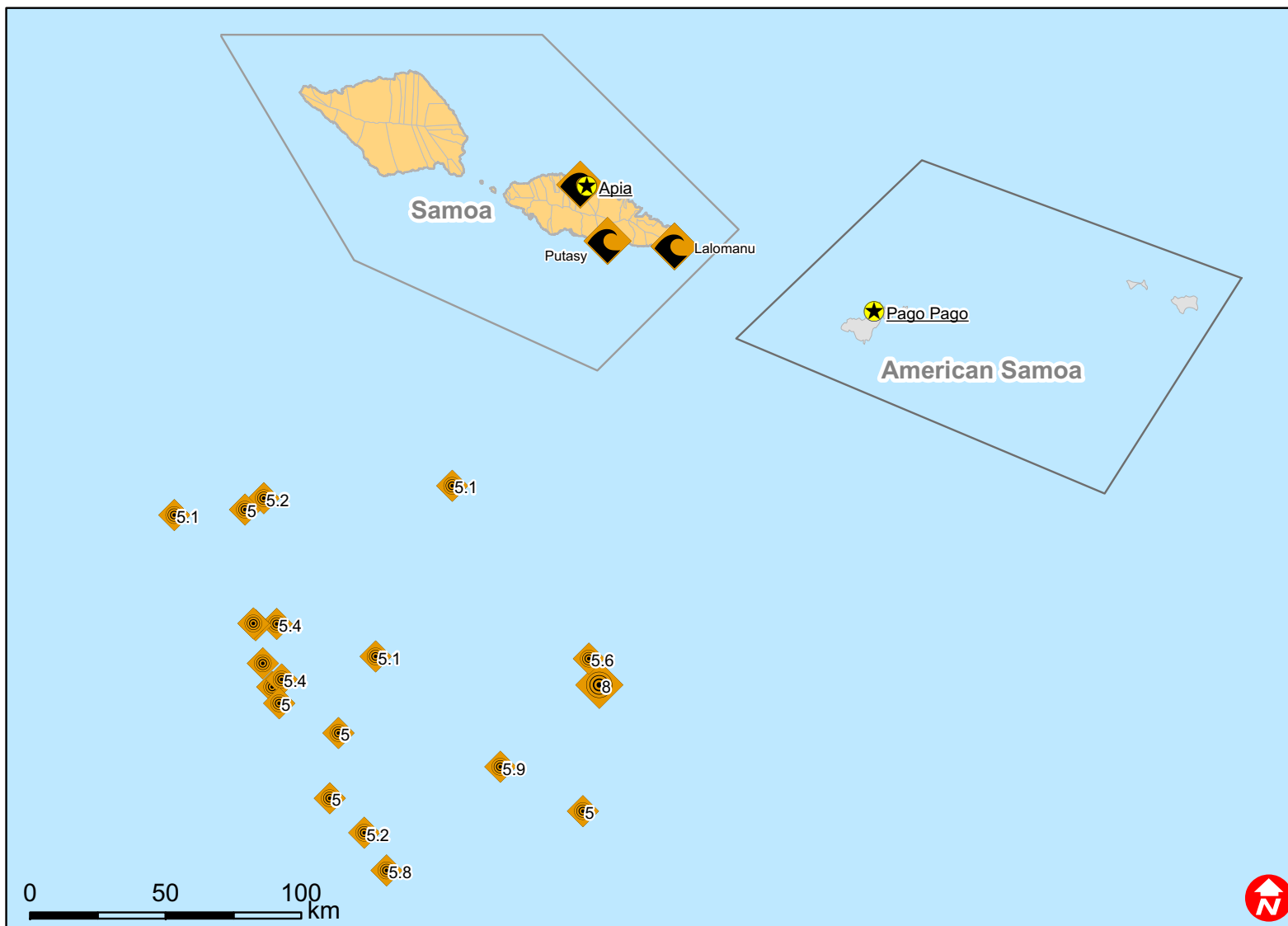
---

<b>Net Request</b>	<b>325,134</b>
--------------------	----------------




---



# Samoa: Tsunami



## Earthquakes

-  Between 5 and 7.9
-  8 and more
-  Area affected by tsunami