

Regional Stocktaking and
Mapping of Disaster Risk Reduction Interventions in
Asia and the Pacific

**Summary of Findings on Initiatives
on Risk Assessment**

Presentation at the IAP Meeting, November 2009, Bangkok



ISDR Asia Partnership

Outline of Section 4

- 4.1 Scope of summary
- 4.2 Structure of summary
- 4.3 Review of Initiatives on Cyclone Risk Assessments
 - 4.3.1 Risk Profile of tropical cyclone in Asia and Pacific
 - 4.3.2 Outputs on risk from tropical cyclones
 - 4.3.3 Outputs on risk from earthquake
 - 4.3.3 Outputs on risk from flood and storm surges



ISDR Asia Partnership

Outline of Section 4

- 4.3.4 Outputs on risk from landslide
- 4.3.5 Outputs on risk from Drought
- 4.3.3 Outputs on risk from Tsunami
- 4.3.3 Outputs on risk from Volcanoes
- 4.3.4 Outputs on risk from Wildfires



ISDR Asia Partnership

4.1 Scope of Summary

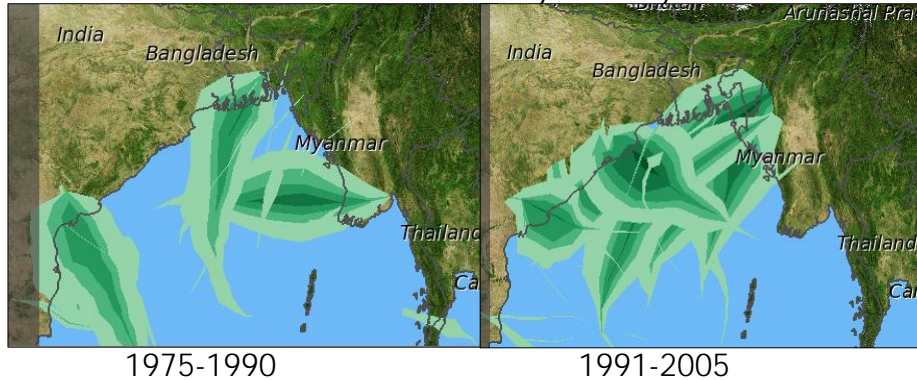
- **Two-fold objectives :**
 - *Usage of initiatives* by IAP Partners and other stakeholders and inform new initiatives on what improvements to make
 - Gaps in initiatives
- **Capture findings from three initiatives**
 - Global Assessment Report, 2009
 - Risk Assessment and Mitigation Measures for natural and conflict related hazards in Asia-Pacific
 - Natural hazards and vulnerability atlases



ISDR Asia Partnership

4.3 Review of Initiatives on Tropical Cyclones

GAR/GRDP: Trend analysis of Cyclone wind



ISDR Asia Partnership

4.3 Review of Initiatives on Tropical Cyclones

PDC : Near Real time position of Storm



Information on cyclone forecast, 5-day potential track, 3-day potential track



ISDR Asia Partnership

GRDP and PDC atlas : At a Glance

GAR/GRDP	PDC Atlas
<ul style="list-style-type: none"> • Wind speed information • Storm surge information • Relative and absolute mortality due to cyclone • Relative and absolute GDP impacted by cyclone • Static information 	<ul style="list-style-type: none"> • Current position of Storm • 5-Day and 3-Day cyclone track and likely damage forecast • Past cyclone information • Demography, Elevation, Hydrography base maps can be overlaid on hazard map • Near real time information



ISDR Asia Partnership

thanks

ISDR Asia Partnership