

Baseline Data Systems and Tools for Fiji

A brief overview

Eduard Jongstra
UNFPA Pacific Sub-Regional Office

Outline

- GIS Systems
 - ARC Info
 - MAP Info
- DevInfo platform
 - Pacific Info
 - Fiji Info
- REDATAM
- Selected tools for rapid assessment

What is a Geographic Information System (GIS)?

- A set of databases, each of which is linked to one of three types of geographical data:
 - A polygon (for instance, representing a province or district)
 - A line (representing a road or river)
 - A point (representing location of a household or hospital)
- All geographical data defined in terms of latitude and longitude
- The geographical information from each database can be overlaid on top of others – map layers
- Each data record is linked to one polygon, line or point and also describes its characteristics
- Those characteristics can be displayed as thematic maps by changing color fills, thickness, or placing symbols in or near the geographical object

GIS systems

- MAPInfo somewhat less capable than ARCInfo, but easier to use
- SPC has chosen to standardize on MAP Info: POPGIS
- FIBOS also uses MAPInfo as platform for its GIS with census data

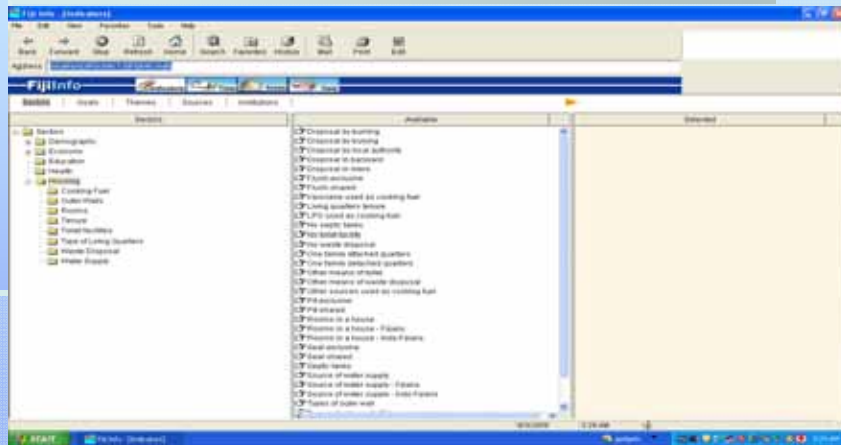
What is DevInfo?

- Adapted from UNICEF ChildInfo database technology
- Released in 2004 primarily for MDG monitoring – release 6 is forthcoming, integrates Emergency Info
- A database system that provides a method to organize, store and display indicators in a uniform format
- Facilitates data sharing across government departments and UN agencies using the same system
- Allows customization of the system to country-specific requirements
- Accommodates indicators
 - from multiple sources,
 - for multiple points in time,
 - for different geographical levels

Fiji Info

- Developed at FIBOS
- Indicators disaggregated to district level
- Contains basic indicators on:
 - Demography
 - Economy
 - Education
 - Health
 - Housing

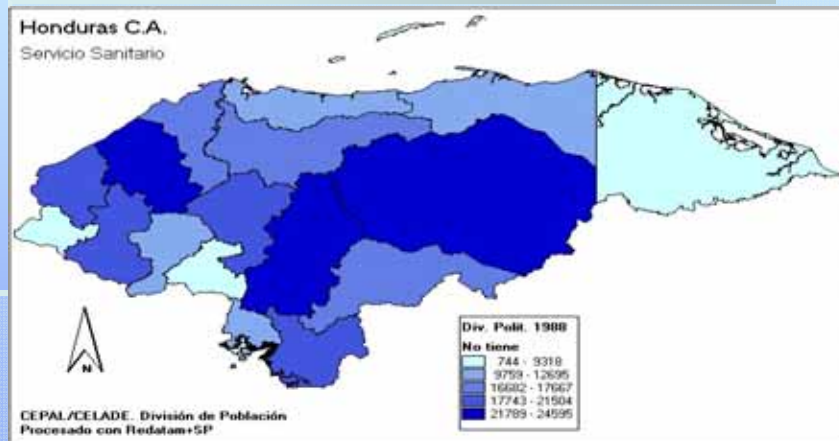
Fiji Info - Interface



What is REDATAM?

- Acronym for REtrieval of DATa for small Areas by Microcomputer
- Allows to create and process hierarchical databases from censuses, surveys, vital statistics and other sources for local, regional and national analyses
- Uses the actual data records and / or aggregated information
- Produce fully customizable tables, thematic maps and graphs for any geographical / administrative level and "standard" or custom indicators
- Confidentiality of data guaranteed by administrators' choice of delimiters

REDATAM – Sample output



Selected tools for Rapid Assessment

- Emergency Info
 - Customizable data collection tool, designed for implementation using PDAs and uploading into DevInfo database
- DesInventar
 - Data collection and analysis methodology to record and assess disaster trends and their impact on communities. Analysis could help identifying vulnerabilities.
- McRAM
 - Multi-cluster Rapid Assessment Mechanism. Assessment tool that covers information required by all key clusters. Can provide data showing the impact of an emergency in order to plan an immediate response and mobilize resources, including flash appeals, in order to fund such a response.

Thank You !