

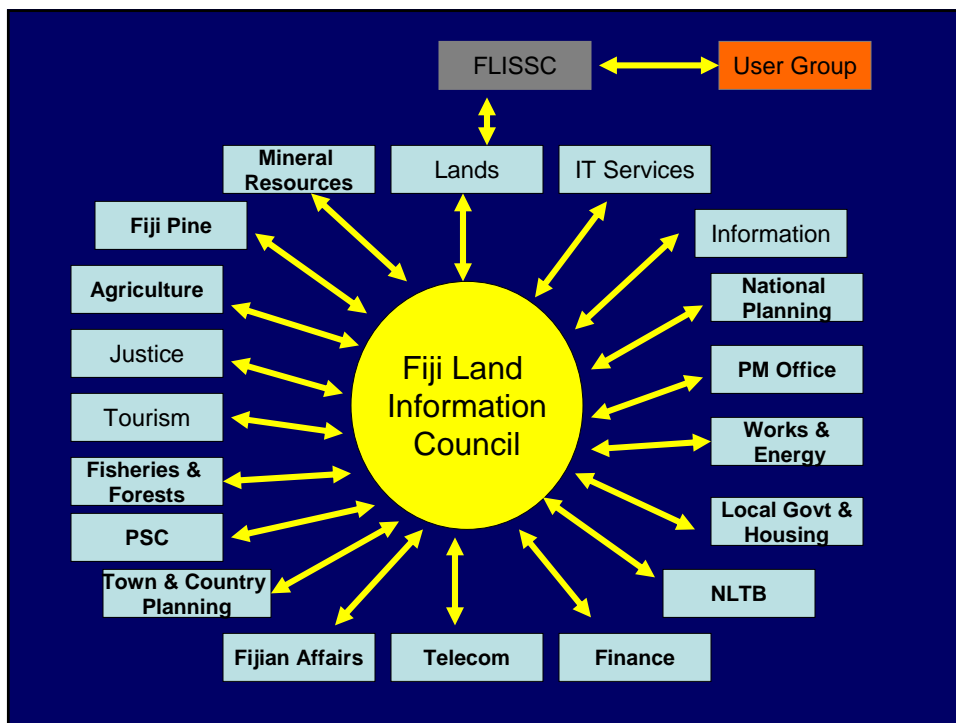
Get GIS/LIS to all users in an effective, efficient and practical manner to aid development & decision-making at all levels

## Presentation Outline

- **Key functions of Mapping and Land Information**
- **Brief Overview of FLIC, FLIS and GIS/RS User Group in Fiji**
- **About FLIS** (Selected topics)
  - Available Information
  - Updating/Maintaining base GIS Information
  - Policies and Standards
  - Assisting Agencies to setup/maintain their GIS Systems
  - Challenges/Problems
- **Some concerns / lessons learnt regarding IM**
- **Way Forward .... Baseline data for Disaster Management**

## Mapping and Land Information ..

- Production and upgrading of Maps and Plans of different types
- Development and maintenance of a computerized land & geographic information system
- Provides IT (hardware, network and database) services to the Department
- It is also the custodian of aerial photographs that are extensively used by government and non-government agencies.
- Provides services to other government and non-government agencies and the general public at the Map Shop in map sales, land searches, survey information and supply of aerial photographs.
- Supports other government and non-government agencies in advising/developing Land Information System (LIS) and Geographic Information System (GIS) applications and also in Human Resources Development.



## **Fiji Land Information Support Centre**

- **FLIS was setup to an technical support for FLIC**
  - Develop/Maintain base GIS/LIS Systems for Fiji
  - Promote GIS/LIS
  - Provide assistance to potential/interested organizations to setup GIS
  - Policies and Standards to support the above

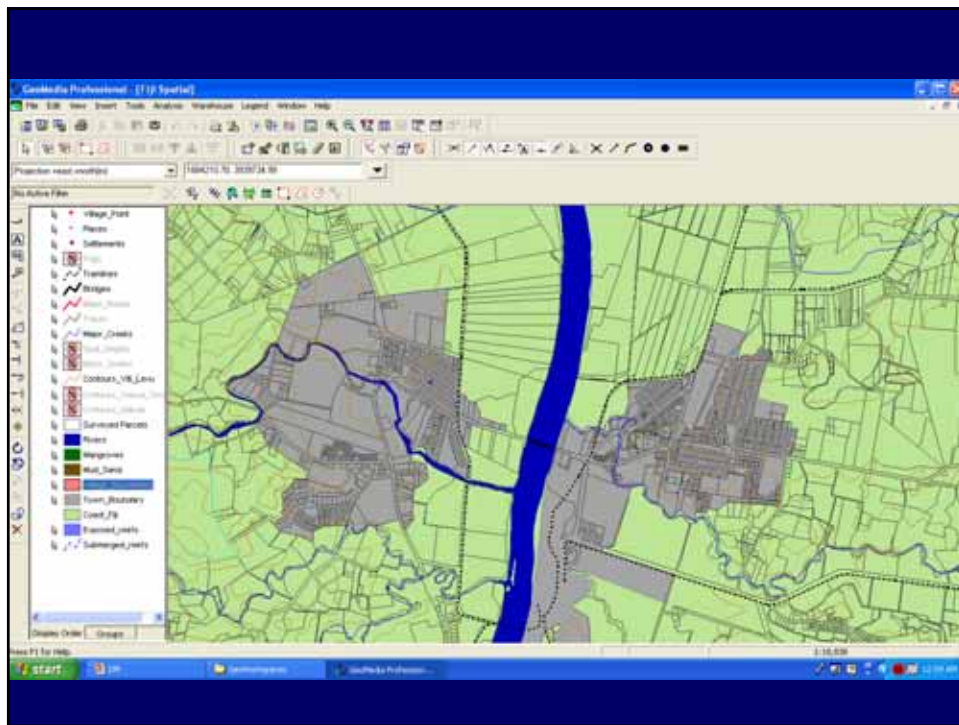
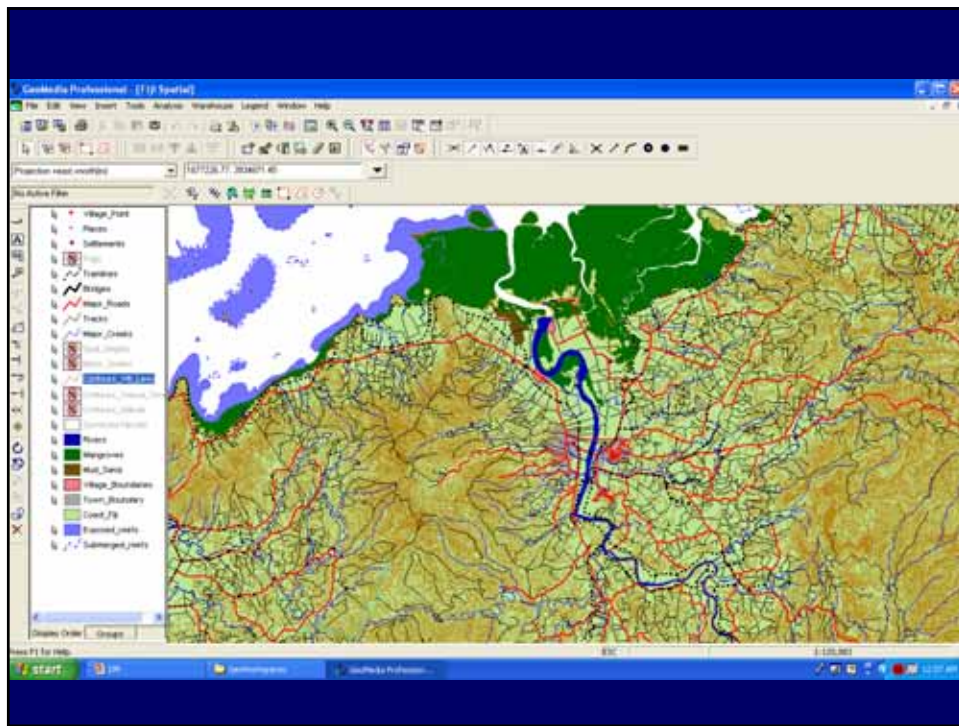
## **GIS/RS User Group**

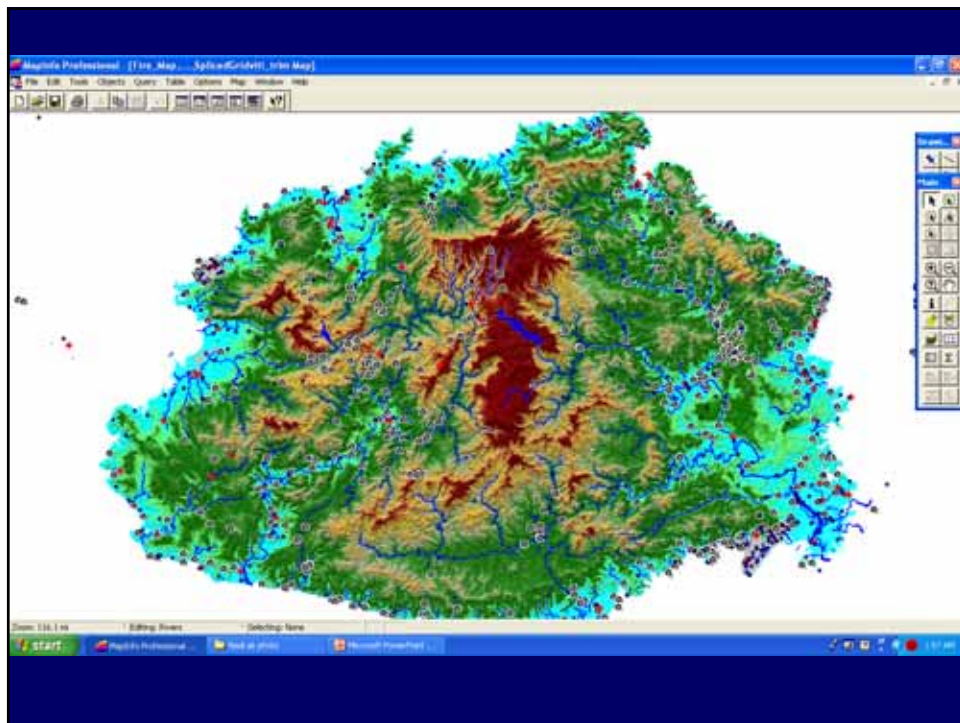
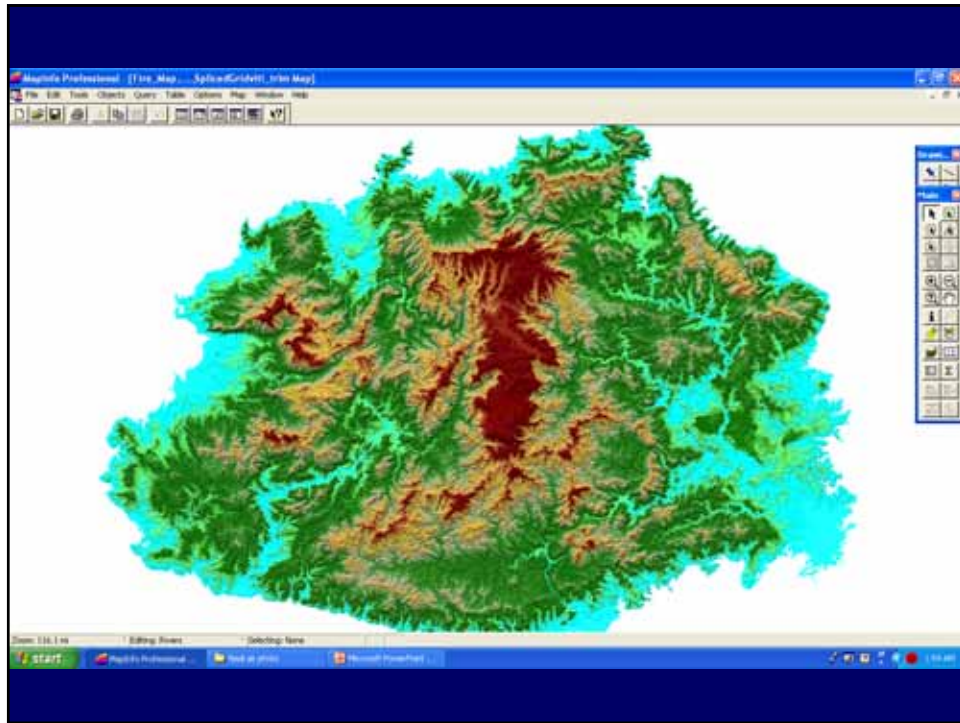
- **was formed so that GIS/RS users from various levels can get together and discuss various technical and issues**
  - Among others GIS group has three organizations that are the driving forces– SOPAC, USP, FLIS

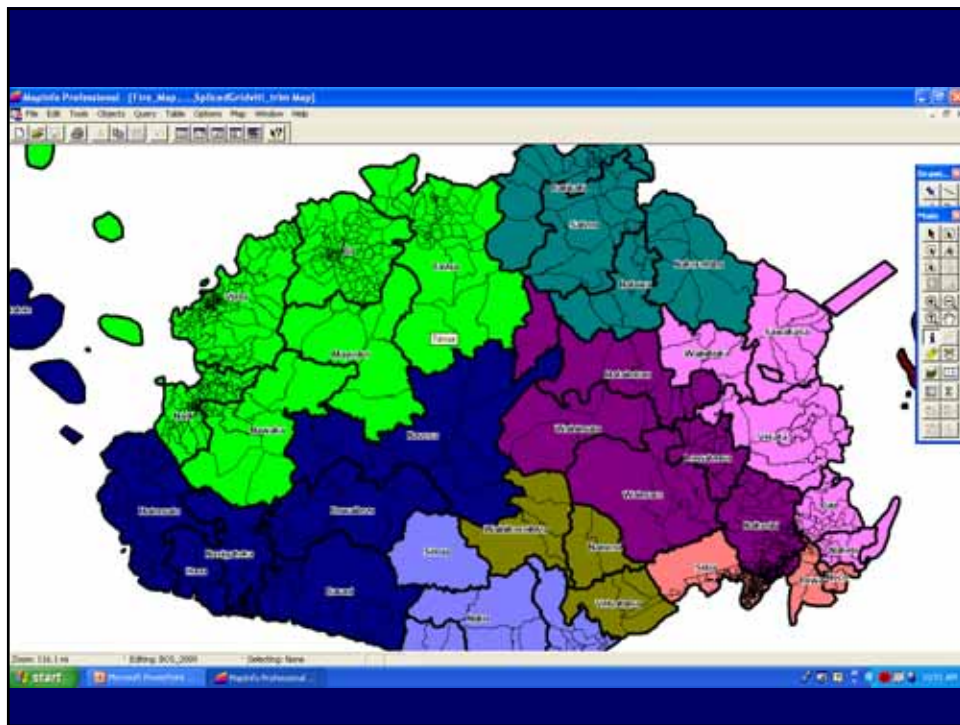
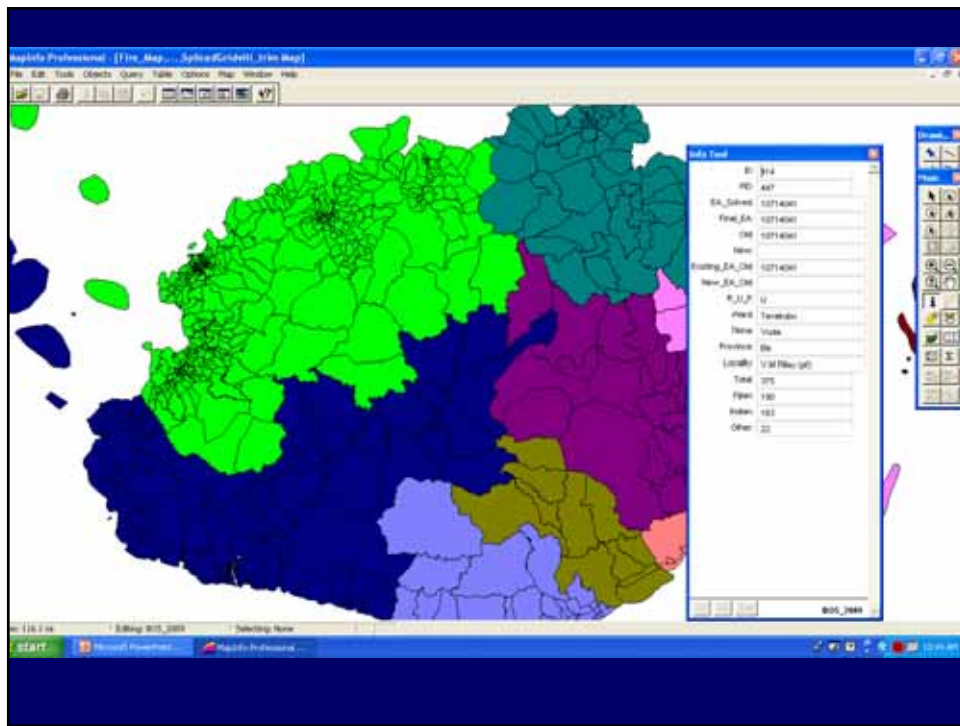
## **Available Information**

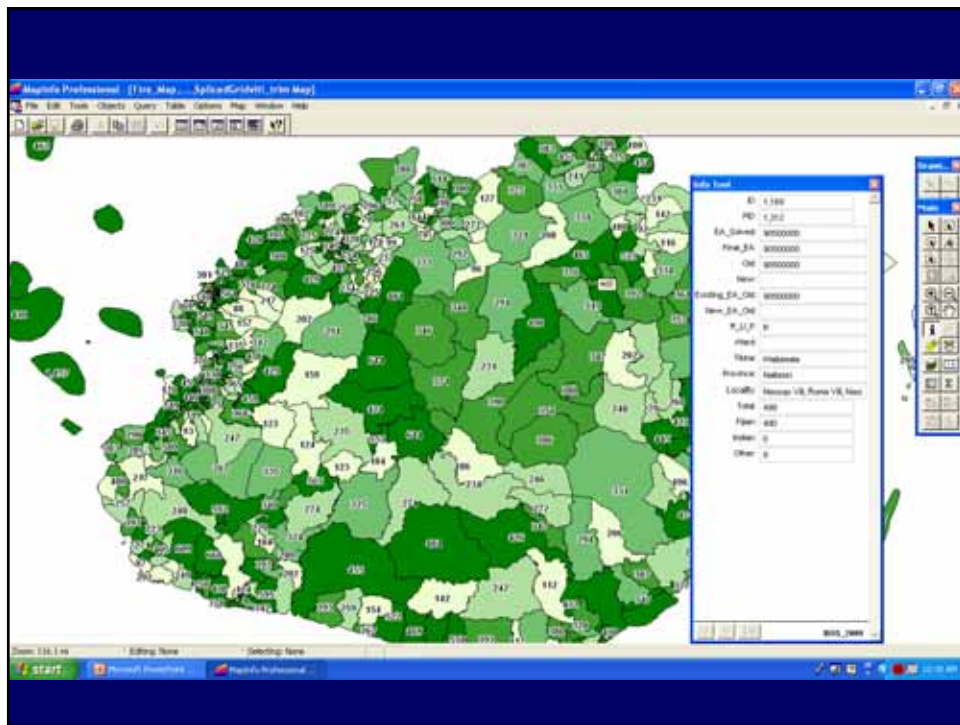
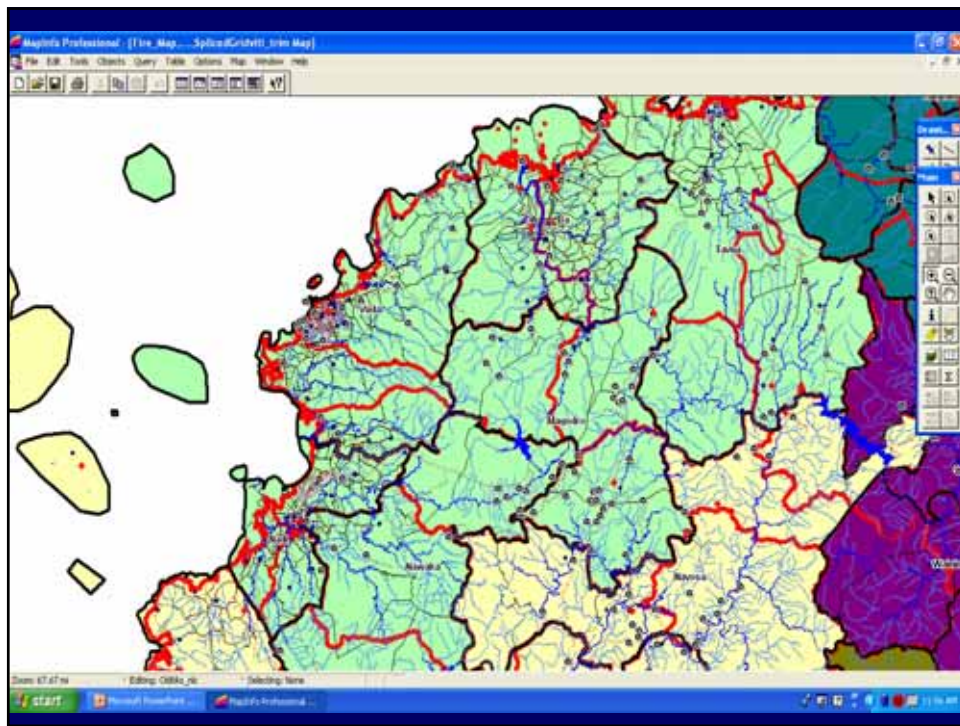
- **GIS Base**
  - Topographical
  - Survey Boundaries Cadastral
  - Native Land Ownership
  - BOS Enumeration Areas
- **Databases**
  - Titles
  - Valuation
  - Lease Administration
  - Survey Plans

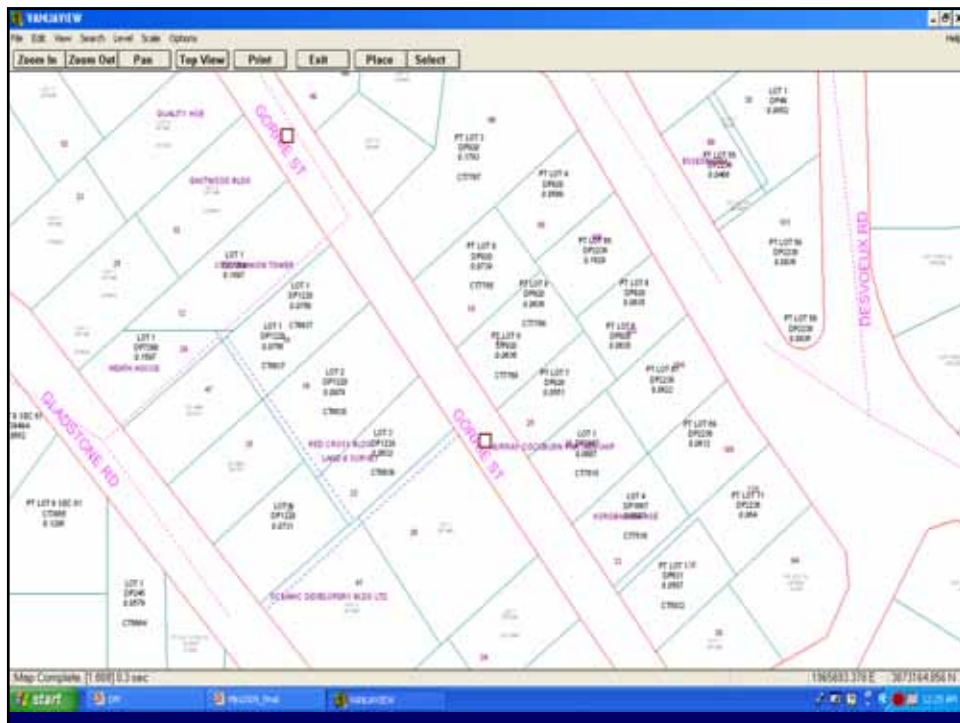
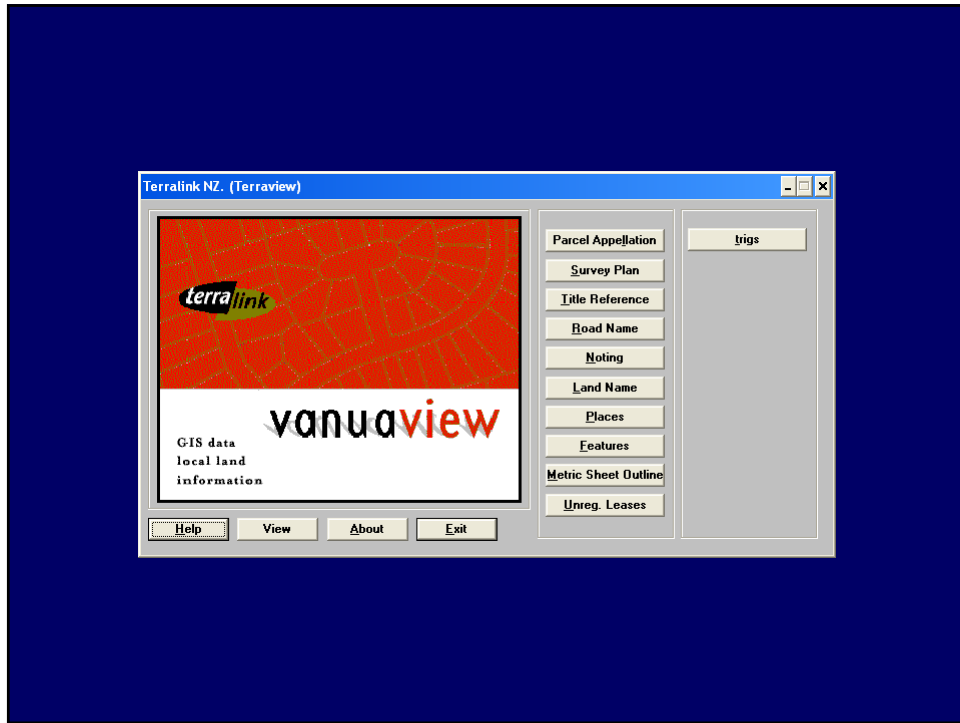


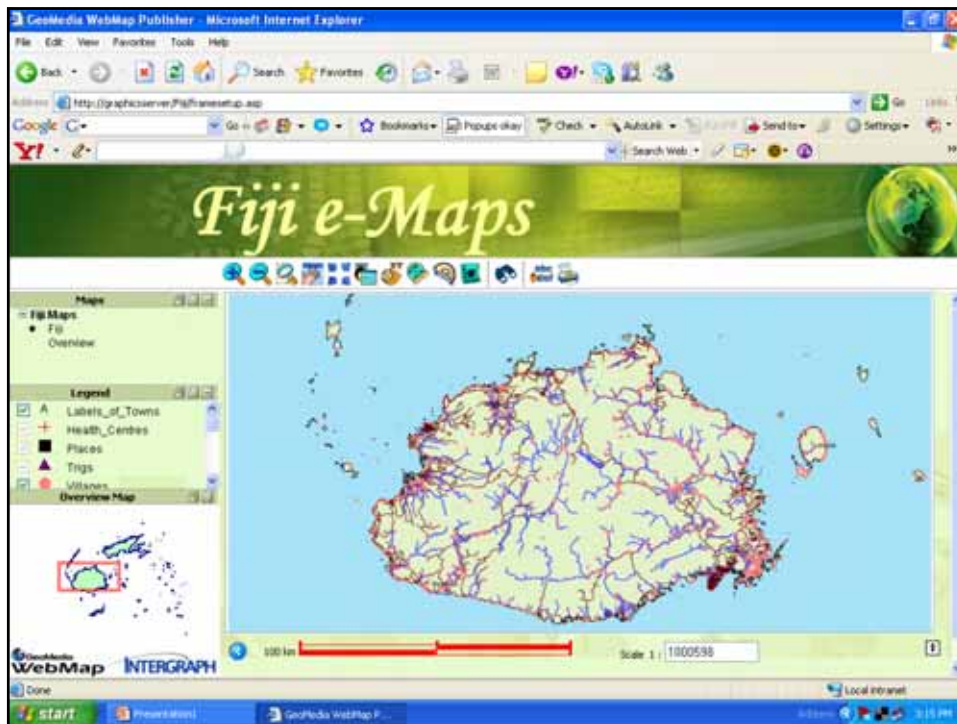












## Policies and Standards

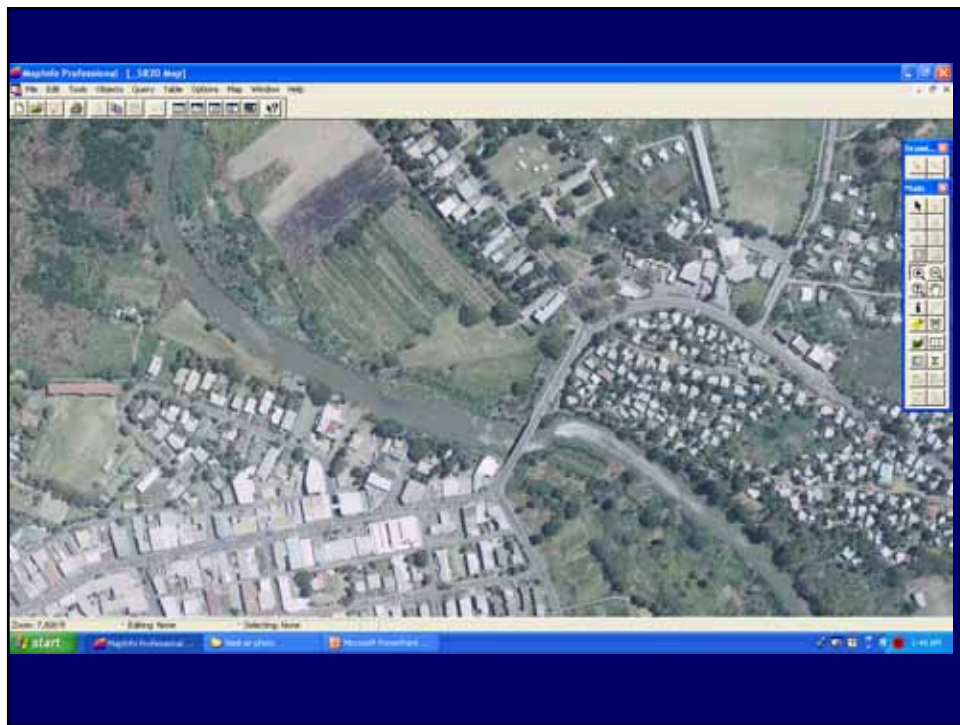
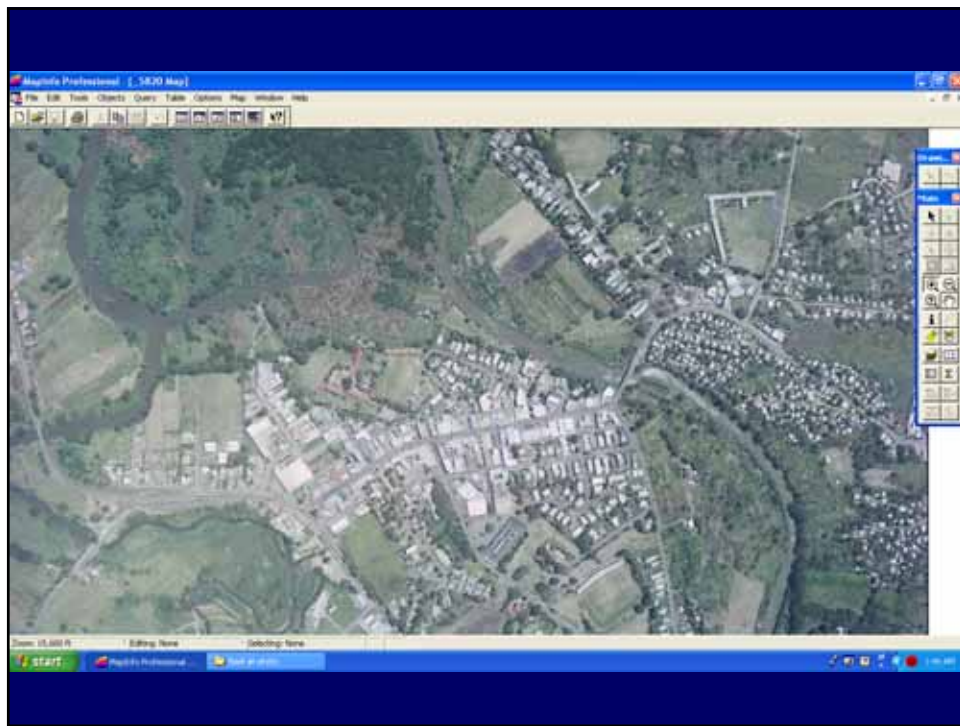
- Standards for Acquiring, Organising, Integrating and Transferring Data
  - Detailed Standards were developed for all Information
    - LIS Databases
    - GIS Base Information
- Data Custodian Policy
  - Every organization is custodian of their data and responsible for maintaining the data according to standards
  - Data Custodian is first point of Contact Data distribution to a third party is Prohibited
- Data Sharing Policy
  - Data would be given at no cost to all FLIC members and interested agencies to use for non-commercial purposes
  - (capacity)
- Data Information Directory
  - Maintain a Data Information Catalog with some necessary metadata and custodian contact information
  - This directory of all kinds of Geographical and Land Information – Digital / Printed etc

## Assisting Agencies to setup/maintain their GIS Systems

- Procedure
  - Requirements Analysis
  - Budget/Project Plan
  - Working Committee of Stakeholders
  - Sort out Data Custodian/Data Sharing
  - (Resources)
  - Basic Training
  - Develop, Implement, Train
  - Review & Training

## Challenges/Problems

- Major Problem is that GIS base Information is getting out of date
  - There is a need for acquisition of new aerial photography to update GIS Information
  - Also some specialized LIDAR data capture for flood plain details
  - With limited resources – Viti Levu Flight is planned in within the two months – (need help??)
- No Mechanism for rapid post-disaster mapping
  - Need to have procedures in place to get RS imagery/aerial photos to do post disaster mapping



## Some lessons learnt..

- Every Organization has/wants to setup owned IM – Integration??
- Standards essential
- A structured Database is essential for information collection
- IT Infrastructure essential
  - One concern is that Fiji Govt IT Services is missing from the Disaster Information Management
- Re-active rather than pro-active approach
- Succession Training

## Way Forward .... Baseline data for Disaster Management

- Requirements Analysis
- Identification
- Who Maintain it?
  - Custodian
  - Data Sharing
- Capacity Building
  - Short term and Long Term
- Develop Systems
- Data Standards
- Integration

- **FLIS can play a major role in collection and maintenance of Baseline GIS Data for Disaster Management**
- **Setup a working group .....**
- **(resources....)**
- **... Published Maps..**